



Choosing the right place for a tree that will grow near power lines

Every tree is different. Each species and variety grows at its own pace and will reach a different final height and spread. That's why it's important to **plant the right tree in the right place**, especially if there are power lines nearby.



Helping trees and the power system coexist

Hydro-Québec trims or removes the trees and branches that get too close to power lines.

This ensures your safety and that of your loved ones and it also helps prevent outages.

You can help maintain electricity service

You can help prevent outages by choosing to plant a tree that is suited to the regional climate and by planting it a **safe distance** from power lines. As a reference, here are some of the species you can plant based on the minimum distance that must be maintained between trees and a **power distribution line**:

Name of species	Common lilac	Amur maple	Crabapple (several varieties)	Ivory Silk Japanese lilac	Common hackberry	White spruce	Tamarack	Red pine	American linden	Yellow birch	Sugar maple	Red oak
Planting distance (in metres)	No restrictions	No restrictions	No restrictions to 5.0	3.5	5.5	6.5	7.0	9.0	11.0	12.5	13.5	14.5
Spread at maturity (in metres)	6.0	6.0	3.0 to 10.0	8.0	15.0	22.0	20.0	24.0	23.0	20.0	20.0	24.0
Height at maturity (in metres)	6.0	6.0	3.0 to 10.0	4.0	8.0	10.0	10.0	12.0	17.0	15.0	15.0	24.0

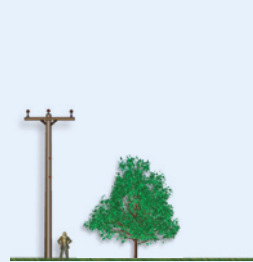
Small saplings can grow into huge trees

Practical and safe landscaping requires thorough planning. It's important to picture the tree at maturity to ensure that it won't be detrimental to the surrounding environment, including power lines.



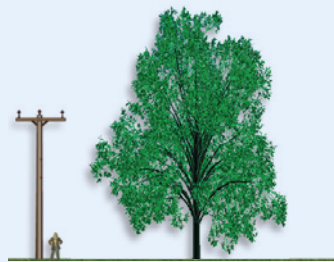
Adams Crabapple

Planting distance:
No restrictions



Ivory Silk Japanese lilac

Planting distance:
3.5 metres



Yellow birch

Planting distance:
12.5 metres



Sugar maple

Planting distance:
13.5 metres

Our tools can help you choose the right tree or shrub:

- > **Near a distribution line:**
arbres.hydroquebec.com/search-trees-shrubs
- > **Near a transmission line:**
hydroquebec.com/vegetation-rights-of-way
- > **Near an underground line:**
hydroquebec.com/vegetation-underground